

## Cassette 1000 (projects)

230V/50Hz | 450 Watt

Experience Better Living



Cassettes



Picture the perfect fireplace. But forget about venting and heat, because flames are made of pure water vapour and LED light. Flames you can reach out and touch. The revolutionary Optimyst® Cassette models redefine the electric fireplace and enable you to add a dramatic fire feature to any space, with stunning realism. This Projects version even lacks the need of a periodic water refill, thanks to its permanent water connection. Ready to be combined and linked with a Cassette 500 Projects.

- Suitable for installation projects and designed to fit into a custom-made frame or fireplace
- Connects to a main water supply, no manual refill needed
- Quick-fit IEC (kettle) connection for an individual fireplace of any length
- Crackling logs sound effects with adjustable volume
- Logset available as an accessory



All-round view



Surprising by the floating flame and smoke effect and variable flame intensity



Optimyst flame technology, flame patterns by cold water vapour



Flames and lamps use energy-efficient LEDs that require no maintenance and can burn separately



Product is delivered without decoration, but can be decorated with a wood set (optional to be ordered)



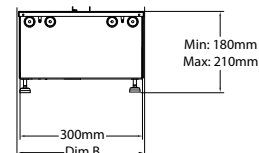
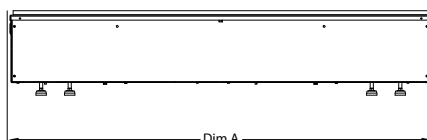
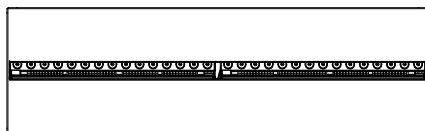
Very suitable for installation

# Cassette 1000 (projects)

230V/50Hz | 450 Watt

Experience Better Living

## Unit Dimensions



### DIMENSIONS

	Width (cm)	Height (cm)	Depth (cm)
Cassette 500 (projects)	51	23	30
Cassette 1000 (projects)	101	23	30

## Specifications

Flame Effect system	Optimyst®
Model number	211446
GTIN/UPC	5011139211446
Model	Cassette
View Type	Four-sided
Colour - Furniture	Black
Media Bed	Metal Plate
Viewing window WxH (cm)	99x20
Build in dim (WxHxD) (cm)	101,9x22,3x30,5
Heating function	No
Heating Element	No
Remote Control	Yes
Manual Operation on the fireplace possible	Yes
Lighting Module	LED
Sound	Yes
Media Bed Flame Colours	No
Heat Setting 1 in Watts	-
Heat Setting 2 in Watts	-
Power consumption (flame effect) (Watt)	450
Wattage	450
Voltage	230V/50Hz
Unpacked Weight (kg)	18,5
Plug Length	1,5 m
Warranty	2 years



All cassettes must have adequate ventilation for an optimal fire experience. For advice, read the manuals or visit the website [www.dimplexfires.com](http://www.dimplexfires.com)